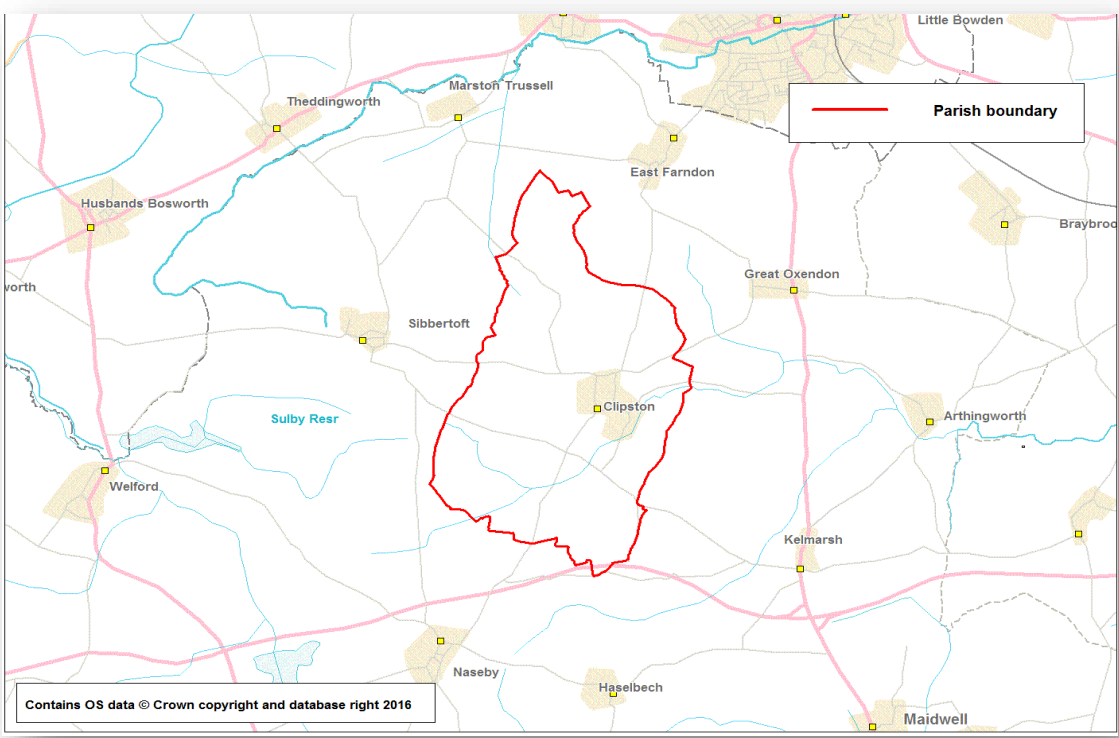


Clipston Parish  
Census 2011 Profile

This Parish Profile presents data from the 2011 Census which took place on 27th March 2011.

It provides comparisons against the borough, region and England averages.



	Clipston		Daventry	East Midlands	England
	No	%	%	%	%
USUAL RESIDENTS BY AGE BAND					
Aged 0-4	35	5.4	5.6	6.0	6.3
Aged 5-15	96	14.9	13.4	12.5	12.6
Aged 16-64	412	64.1	64.0	64.5	64.8
Aged 65+	100	15.6	16.9	17.1	16.3
All Usual Residents	643	100.0	100.0	100.0	100.0
ETHNIC GROUP					
White	625	97.2	96.5	89.3	85.4
Mixed/Multiple Ethnic groups	11	1.7	1.2	1.9	2.3
Asian	5	0.8	1.5	6.5	7.8
Black	2	0.3	0.6	1.8	3.5
Other Ethnic Groups	-	0.0	0.1	0.6	1.0
All Usual Residents	643	100.0	100.0	100.0	100.0
RELIGION					
Christian	460	71.5	64.7	58.8	59.4
Buddhist	-	-	0.4	0.3	0.5
Hindu	4	0.6	0.4	2.0	1.5
Jewish	-	-	0.1	0.1	0.5
Muslim	-	-	0.6	3.1	5.0
Sikh	-	-	0.2	1.0	0.8
Other Religion	5	0.8	0.3	0.4	0.4
No Religion	144	22.4	26.6	27.5	24.7
Religion Not Stated	30	4.7	6.8	6.8	7.2
All Usual Residents	643	100.0	100.0	100.0	100.0
HIGHEST LEVEL OF QUALIFICATION					
No Qualifications	65	12.7	19.6	24.7	22.5
Level 1 Qualifications	55	10.7	13.3	13.9	13.3
Level 2 Qualifications	81	15.8	16.0	15.6	15.2
Apprenticeship	27	5.3	5.3	4.0	3.6
Level 3 Qualifications	59	11.5	11.7	12.9	12.4
Level 4 Qualifications and Above	201	39.3	28.2	23.6	27.4
Other Qualifications	24	4.7	6.0	5.3	5.7
All Usual Residents Aged 16 and Over	512	100.0	100.0	100.0	100.0
ECONOMIC ACTIVITY & INACTIVITY					
All Usual Residents Aged 16 to 74	476	100.0	100.0	100.0	100.0
<i>Economically Active Total</i>	<i>345</i>	<i>72.5</i>	<i>73.5</i>	<i>69.3</i>	<i>69.9</i>
Employee, Part-time	69	14.5	13.9	14.4	13.7
Employee, Full-time	166	34.9	44.6	38.8	38.6
Self Employed	81	17.0	8.9	8.7	9.8
Unemployed	13	2.7	3.6	4.2	4.4
Full-time Student (economically active)	16	3.4	2.5	3.3	3.4
<i>Economically inactive Total</i>	<i>131</i>	<i>27.5</i>	<i>26.5</i>	<i>30.7</i>	<i>30.1</i>
Retired	71	14.9	14.7	15.0	13.7
Student (including Full-Time Students)	20	4.2	3.9	5.8	5.8
Looking After Home or Family	21	4.4	3.5	4.0	4.4
Long-Term Sick or Disabled	10	2.1	2.8	4.1	4.0
Other	9	1.9	1.5	1.9	2.2

	Clipston		Daventry	East Midlands	England
	No	%	%	%	%
<b>METHOD OF TRAVEL TO WORK</b>					
Work Mainly at or From Home	50	10.5	5.7	3.3	3.5
Underground, Metro, Light Rail, Tram	1	0.2	0.1	0.2	2.6
Train	10	2.1	1.3	0.9	3.5
Bus, Minibus or Coach	1	0.2	1.0	4.0	4.9
Taxi	-	0.0	0.1	0.3	0.3
Motorcycle, Scooter or Moped	2	0.4	0.4	0.5	0.5
Driving a Car or Van	232	48.7	49.5	42.2	36.9
Passenger in a Car or Van	12	2.5	3.3	3.9	3.3
Bicycle	1	0.2	0.9	1.8	1.9
On Foot	19	4.0	6.2	7.1	6.9
Other Method of Travel to Work	1	0.2	0.3	0.3	0.4
Not in Employment	147	30.9	31.1	35.7	35.3
All Usual Residents Aged 16 to 74	476	100.0	100.0	100.0	100.0
<b>HEALTH</b>					
Very Good Health	359	55.8	48.4	45.3	47.2
Good Health	180	28.0	35.3	35.1	34.2
Fair Health	77	12.0	12.1	14.0	13.1
Bad Health	23	3.6	3.3	4.3	4.2
Very Bad Health	4	0.6	0.9	1.2	1.2
All Usual Residents	643	100.0	100.0	100.0	100.0
<b>Long-Term Health Problem or Disability</b>					
Day-to-Day Activities Limited a Lot	34	5.3	6.6	8.7	8.3
Day-to-Day Activities Limited a Little	56	8.7	9.0	9.9	9.3
Day-to-Day Activities Not Limited	553	86.0	84.4	81.4	82.4
All Usual Residents	643	100.0	100.0	100.0	100.0
<b>Provision of Unpaid Care</b>					
Provides No Unpaid Care	562	87.4	89.1	89.2	89.8
Provides 1 to 19 Hours Unpaid Care a Week	62	9.6	7.7	6.9	6.5
Provides 20 to 49 Hours Unpaid Care a Week	7	1.1	1.1	1.4	1.4
Provides 50 or More Hours Unpaid Care a Week	12	1.9	2.0	2.5	2.4
All Usual Residents	643	100.0	100.0	100.0	100.0
<b>HOUSEHOLDS AND HOUSEHOLD SPACES</b>					
All Household Spaces	261	100.0	100.0	100.0	100.0
Household Spaces With At Least One Usual Resident	252	96.6	97.0	96.0	95.7
Household Spaces With No Usual Residents (empty homes)	9	3.4	3.0	4.0	4.3
<b>COMMUNAL ESTABLISHMENTS</b>					
Number of communal establishments	-				
All usual residents in communal establishments	-				
<b>TENURE</b>					
All occupied Households	252	100.0	100.0	100.0	100.0
Owned; Owned Outright	103	40.9	33.3	32.8	30.6
Owned; Owned with a Mortgage or Loan	90	35.7	38.4	34.5	32.8
Shared Ownership (Part Owned and Part Rented)	-	0.0	0.9	0.7	0.8
Social Rented; Rented from Council (Local Authority)	5	2.0	4.1	10.1	9.4
Social Rented; Other	22	8.7	9.9	5.7	8.3
Private Rented; Private Landlord or Letting Agency	28	11.1	11.0	13.6	15.4
Private Rented; Other	1	0.4	1.1	1.3	1.4
Living Rent Free	3	1.2	1.4	1.3	1.3
<b>ACCOMMODATION TYPE</b>					
All household spaces (occupied + vacant)	261	100.0	100.0	100.0	100.0
Detached	158	60.5	42.7	32.2	22.3
Semi-Detached	73	28.0	31.2	35.1	30.7
Terraced	28	10.7	18.9	20.6	24.5
Flat, Maisonette or Apartment	2	0.8	7.0	11.7	22.1
Caravan or Other Mobile or Temporary Structure	-	0.0	0.2	0.4	0.4
<b>NUMBER OF BEDROOMS</b>					
All Household Spaces With At Least One Usual Resident	252	100.0	100.0	100.0	100.0
No Bedrooms	-	0.0	0.2	0.2	0.2
1 Bedroom	4	1.6	5.6	8.1	11.8
2 Bedrooms	44	17.5	21.6	26.5	27.9
3 Bedrooms	92	36.5	39.9	45.4	41.2
4 Bedrooms	70	27.8	24.6	15.4	14.4
5 or More Bedrooms	42	16.7	8.0	4.4	4.6

	Clipston		Daventry	East Midlands	England
	No	%	%	%	%
<b>DEPRIVATION</b>					
All occupied Households	252	100.0	100.0	100.0	100.0
Household is Not Deprived in Any Dimension	147	58.3	50.7	42.8	42.5
Household is Deprived in 1 Dimension	72	28.6	31.4	32.4	32.7
Household is Deprived in 2 Dimensions	28	11.1	14.9	19.6	19.1
Household is Deprived in 3 Dimensions	5	2.0	2.7	4.8	5.1
Household is Deprived in 4 Dimensions	-	-	0.2	0.4	0.5
<b>HOUSEHOLD SIZE</b>					
All Household Spaces With At Least One Usual Resident	252	100.0	100.0	100.0	100.0
1 Person in Household	51	20.2	25.1	29.0	30.2
2 People in Household	98	38.9	38.6	36.2	34.2
3 People in Household	37	14.7	15.8	15.6	15.6
4 People in Household	49	19.4	14.3	12.9	13.0
5 People in Household	13	5.2	4.7	4.3	4.7
6 People in Household	4	1.6	1.2	1.4	1.7
7 People in Household	-	-	0.2	0.3	0.4
8 or More People in Household	-	-	0.1	0.2	0.3
<b>CAR OR VAN AVAILABILITY</b>					
All occupied Households	252	100.0	100.0	100.0	100.0
No Cars or Vans in Household	9	9.3	12.0	22.1	25.8
1 Car or Van in Household	82	37.5	37.4	42.5	42.2
2 Cars or Vans in Household	112	37.6	36.4	27.4	24.7
3 Cars or Vans in Household	29	12.6	10.1	6.0	5.5
4 or More Cars or Vans in Household	20	2.9	4.1	2.0	1.9
All Cars or Vans in Area	483				

Source: Office for National Statistics licensed under the Open Government Licence v.3.0.

The data in this profile is derived from the following tables c/o NOMIS website and is subject to Crown Copyright.

Economic Activity, 2011 (QS601EW); Tenure, 2011 (KS402EW); Religion, 2011 (KS209EW); Accommodation Type - Households, 2011 (QS402EW); Number of Bedrooms, 2011 (QS411EW); Provision of Unpaid Care, 2011 (QS301EW); Households by Deprivation Dimensions, 2011 (QS119EW); Age Structure, 2011 (KS102EW); Tenure - Households, 2011 (QS405EW); Household Size, 2011 (QS406EW); Ethnic Group, 2011 (QS201EW); Long-Term Health Problem or Disability, 2011 (QS303EW); Car or Van Availability, 2011 (QS416EW); Method of Travel to Work, 2011 (QS701EW); Household Spaces, 2011 (QS417EW); Dwellings, Household Spaces and Accommodation Type, 2011 (KS401EW); General Health, 2011 (QS302EW); Highest Level of Qualification, 2011 (QS501EW)